



Machinery for

ANIMAL FAT AND PROTEIN RECOVERY



Lifetime partner for your rendering machinery

Machinery for

ANIMAL FAT AND PROTEIN RECOVERY

Double shaft secondary crusher

Rendering is the process that converts by-products from the meat and livestock industry into valuable materials.

RENTEC offers a range of machinery necessary to carry out all the steps in the dry or wet rendering process that leads to animal fat and protein recovery:

- coarse and fine sizing with a DYNO primary crusher, a KALIBRO secondary crusher or FINER cutter
- evaporating with a batch cooker to reduce the moisture content
- sterilisation to kill micro-organism with a batch pressure steriliser
- hydrolyser for the treatment of feathers
- transportation systems and storage equipment.



Steam heated stirrer for 16,000 L pressure steriliser



Intermediate steam heated, mixing storage bunker

Our solutions find their way across the globe to waste disposal companies that:

- process animal by products: bones, feathers, blood, ...
- produce gelatine
- sterilize/hygenize organic residual flows for fermentation
- melt animal fats
- destroy animal carcasses

RENTEC has the know-how and experience to treat your products with environmentally friendly and energy saving technology. Our tailor-made solutions, the robust construction of our installations and our excellent after-sales service turn RENTEC into your lifetime partner for your rendering machinery.

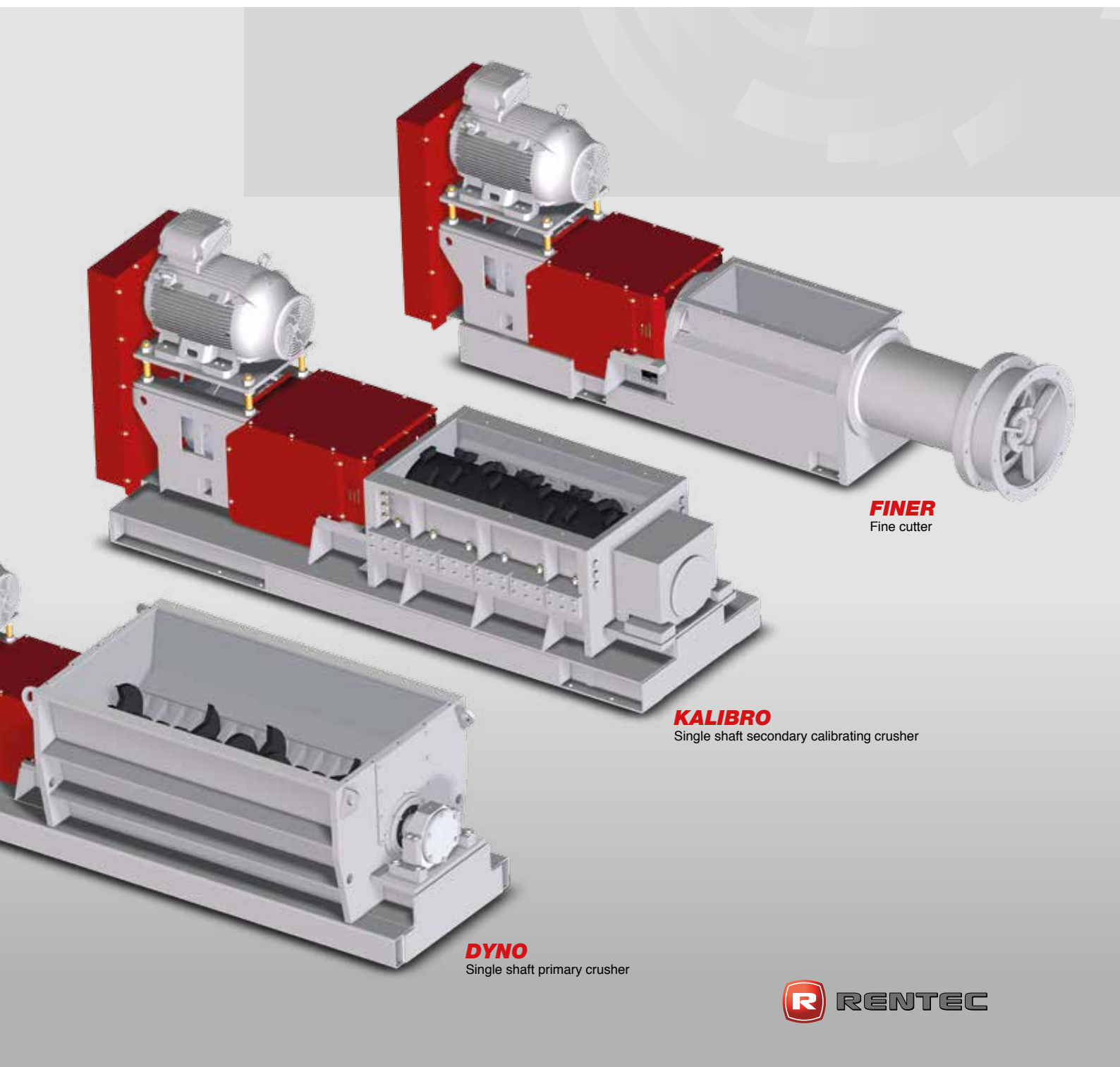




Double shaft primary crusher



8.000 L Pressure steriliser

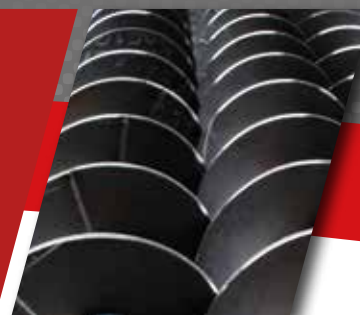


FINER
Fine cutter

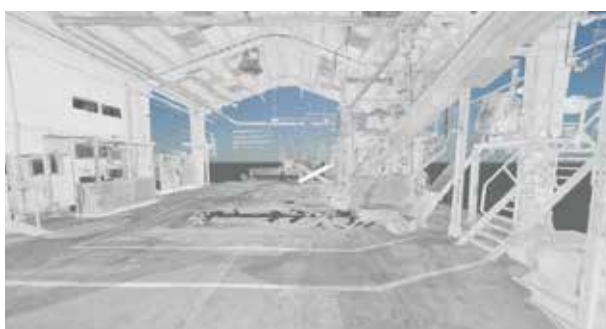
KALIBRO
Single shaft secondary calibrating crusher

DYNO
Single shaft primary crusher

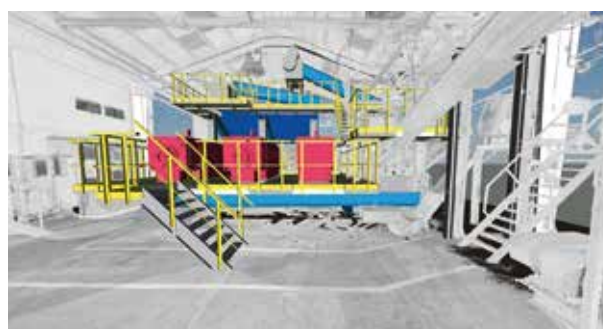
Machinery for **ANIMAL FAT AND PROTEIN RECOVERY** Service & Products



Upgrades of existing plants due to market changes or sector legislation are often very difficult because of lack of as-built plant lay-out drawings. RENTEC offers the solution by making a 3D scan of your plant, so new machinery can be fitted easily into the existing installation. This technology is much more precise and time and money saving than manual measuring. It avoids conflicts with existing components during set-up and guarantees a maintenance friendly plant lay-out.



3D scan of existing plant lay-out



conflict check of upgrade in existing plant lay-out

PRODUCT RANGE	Solution	Specifications	
DYNO Primary Crusher	sizing	type	slow speed, high torque
		capacity	up to 80 T/h
		grain size	up to <50 mm (*) depending on model
KALIBRO Secondary Crusher	sizing	type	slow speed, high torque
		capacity	up to 80 T/h
		grain size	up to <20 mm (*) depending on model
FINER Cutter	sizing	capacity	up to 15 T/h
Cooker Steriliser / Hydrolyser	evaporation / sterilisation	type	atmospheric batch cooker batch pressure steriliser / hydrolyser indirect steam heated body and/or stirrer
		volume	6.000 / 8.000 / 12.000 / 16.000 / 25.000 L
Conveyor Systems	transport	type	screw conveyor or belt conveyor
		dimension	250 to 1000 mm diameter
		material	carbon steel or stainless steel
Reception Bunker	storage	capacity	up to 200 m ³
		material	carbon steel or stainless steel
(*) in one dimension			